

JAN VHF CHALLENGE

Mel, KC0P/R Jan 21-23, 2019 along with
Carol, N0HZO/R, Nate, KA0CRO and
Denise, KB0MRK.

TOPICS

- ANTENNA FIASCO
- OPERATOR INEPTITUDE
- UNEXPECTED GOOD RESULTS

ANTENNA FIASCO

GETTING READY

- **Contest starts Jan 19 at 1 PM. Start near St. Charles.**
- **Forecast is for 15 degrees F and some wind.**
- **Should put antennas on truck Friday.**
- **Snow forecast to start 10 AM Friday.**
- **Better get up early and beat the snow.**

432, 902, 1296 stack ready in garage



6 Bands Ready Friday 10 AM



OOPS, FLAT TIRE !



RECOVERY PLAN

- Too flat to drive to put in air.
- Call a garage and have them pump it up.
- Drive truck to garage and have them fix the tire.
- Make sure they have doors high enough to clear all antennas on the truck.
- They assure me they have 14 foot doors, they can put two ton Vans in there and work on them, no problem.

SURPRISE

- They came to me in the waiting room and announced “We ran into a problem but I think we can fix it with JBweld and some hose clamps”.
- Had an accident, the door didn’t go all the way up !

BUSTED ANTENNAS 144 & 1296



ANOTHER VIEW OF 144 & 1296



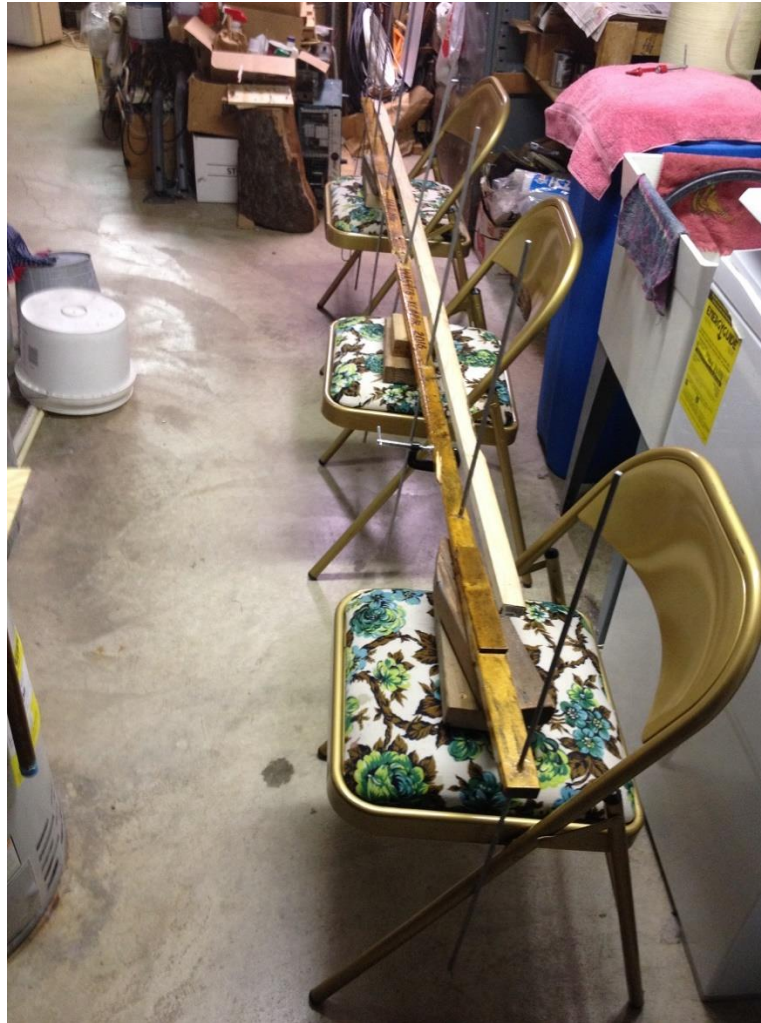
4 ELEMENTS FOR 144 MHz



MAST TO BOOM CLOSE-UP



APPLYING A SPLINT



GETTING SPLINT LINED UP



TRANSFERRING ELMNT LOCATION



DRILLING SPLINT

- **Elements loose fit in Quarter Inch hole.**
- **Drill to Three Eights for clearance and location tolerance.**
- **Counter Bore Half inch to clear gobs of epoxy holding elements to Boom.**
- **Use six machine bolts to hold splint onto Boom.**
- **Had enough wood and bolts to do the job without another trip to Menards or Fleet Farm !**

Drilling for Boom to Mast Plate



EARLY SATURDAY MORNING



4 INCH SNOW OVERNITE



LAST MINUET PREP

- **Shovel out the truck.**
- **Remount Jury Rigged 2 M antenna.**
- **Add 6 M dipole.**
- **Add Honda 2 KW Generator.**
- **Ready to drive to East St. Charles grid corner.**

SETTING UP IN EN43 FOR START

- Holden Farms is an Excellent Hilltop location on Winona County 115 in EN43wx.
- Very good take off towards K0AWU, K0SIX, KA0RYT, W0GHZ, W0ZQ, W0UC and K2DRH (if we listen hard we can work WB0LJC & KC0IYT).
- Got set up and operational by 1915, off to a good start.

VIEW TO NW



VIEW TO NE



VIEW TO SE



ANOTHER VIEW TO SE



Car on US 14,
Two Mi away on
AZ to K2DRH

|

OPERATOR INEPTITUDE

START OF OPERATIONS

- Hear K0AWU calling with his KW on 144.195, my published frequency. Give him a call and he doesn't hear me because he doesn't come back.
- Maybe conditions are not too good today.
- Hear W0UC calling and he doesn't respond either.
- Carol asks "are you sure you have all the knobs in the right position" ?
- Rig is keying the 2 M brick, so I have the antenna selector switch in the right position.
- Keep tuning and turning but nobody answers ?

WHAT IS GOING ON ?

- **Get a call on Cell Phone from K2DRH, are you still in EN43 ?**
- **Yes but nobody is hearing me !**
- **Bob listens for me, “I hear nothing. Are you sure you have all the knobs in the right position “ ?**
- **Let me check it out again.**

Yaesu FT-857



SEE ANYTHING WRONG ?



SPL means SPLIT



HOW TO TURN OFF SPLIT ?



C BUTTON ON VFO A/B MENU



OPERATIONAL @ 2:45 CST

- Worked K2DRH on 5 bands, Good start.
- Worked W0UC on 6 bands including 1296 SSB !
- Worked W0GHZ on 5 bands, no 1296 or 2304.
- Total of 24 contacts from EN43, time to move to EN33.
- Worked W0GHZ on 5 bands again.
- Picked up AC0RA/R in EN41 on 4 bands (limited R).
- Worked K0SIX in EN35 on 2 bands.
- Total of 18 contacts from EN33. Cold, windy and getting dark. Time to pack it in for the day.

True Story

- I recently started to talk about going to St. Charles for Spring Sprints.
- Carol said “You see these two wires, take on in each hand. -----

UNEXPECTED GOOD RESULTS

SUNDAY AFTERNOON

- Church Sunday morning in Lakeville.
- Lunch at Baldy's BBQ in McStop. Mel, Carol, Nate and Denise. Four family operators at EN34ip on a Contest day. How convenient to be at another Hilltop !
- Again 15 deg and windy. Only two fit in truck and Nate out the window on the running board, operating and taking pictures.

VIEW TOWARDS W0GHZ



Start / Mel, Denise & Nate to W0UC



East towards W0UC



Carol working W0GHZ



Take off towards K2DRH



Operation at McStop EN34ip



CLIMBING UP AT McSTOP EN34ip



REMOVING 6 M DIPOLE



SUMMARY FOR EN34ip

- We worked W0UC, W0GHZ and K2DRH.
- Mel had 23 contacts.
- Carol had 22 contacts.
- Nate had 22 contacts.
- Denise had 14 contacts.
- Could work W0UC on 902 but not 1296.
- On to Rosedale Shopping center for EN35ja.

EN35ja N. Prior Ave, past Oakcrest



EN35ja E. Herberger's to K2DRH



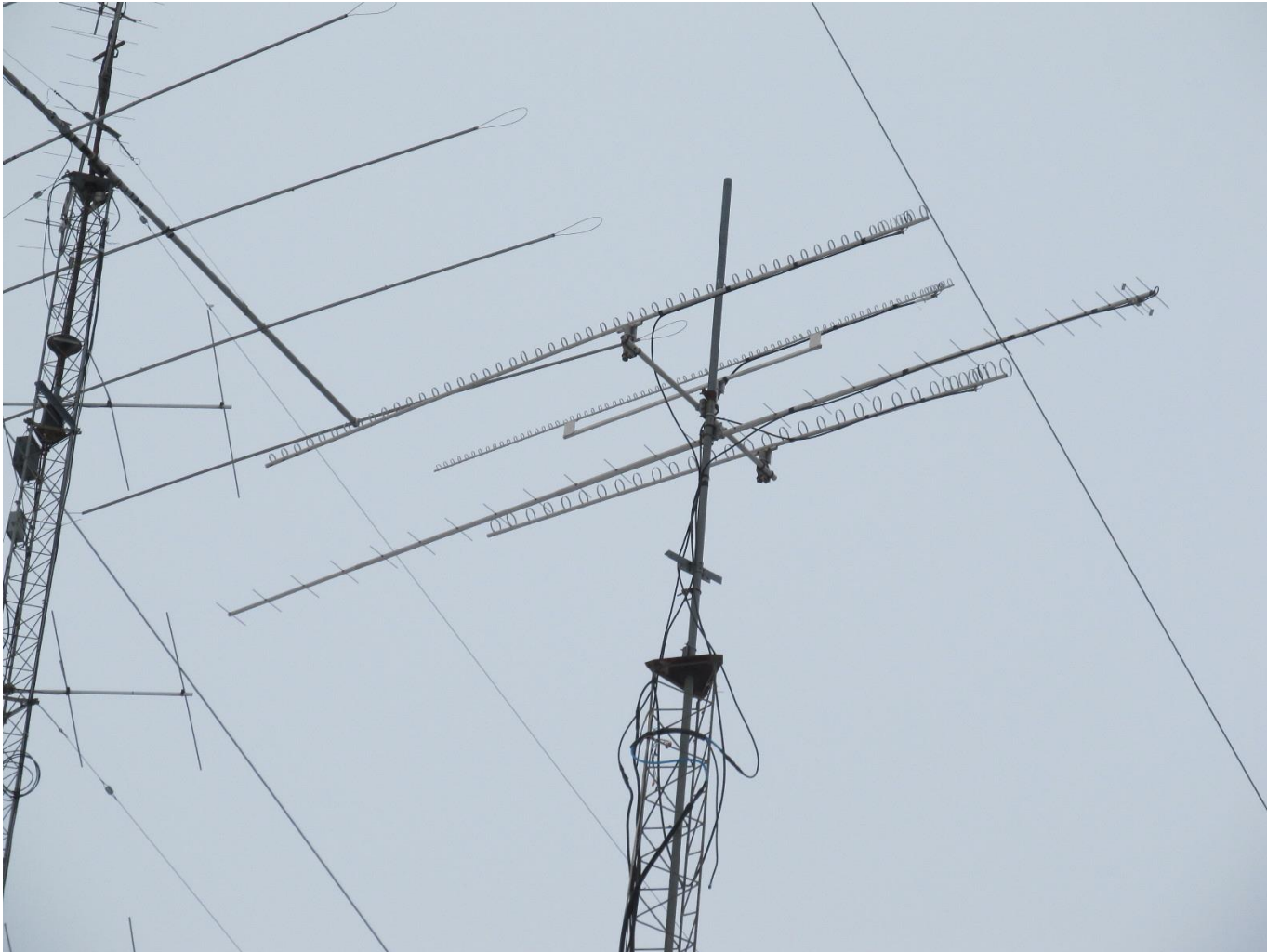
Summary from EN35ja

- Worked K0AWU on 144, 432 and 222 SSB, Bill did not have high power warmed up !
- Worked K2DRH on 144 & 432 CW, not strong.
- Worked W0UC on 50, 144, 222, 432 SSB and 1296 CW.
- Worked K9MU on 144 & 432 SSB.
- Worked W0GHZ on 50, 144, 222, 432, 902, 1296, 2304 SSB.
- Mel wound up with 88 contacts and Carol 87.
- Still fun to go out and give it a try.

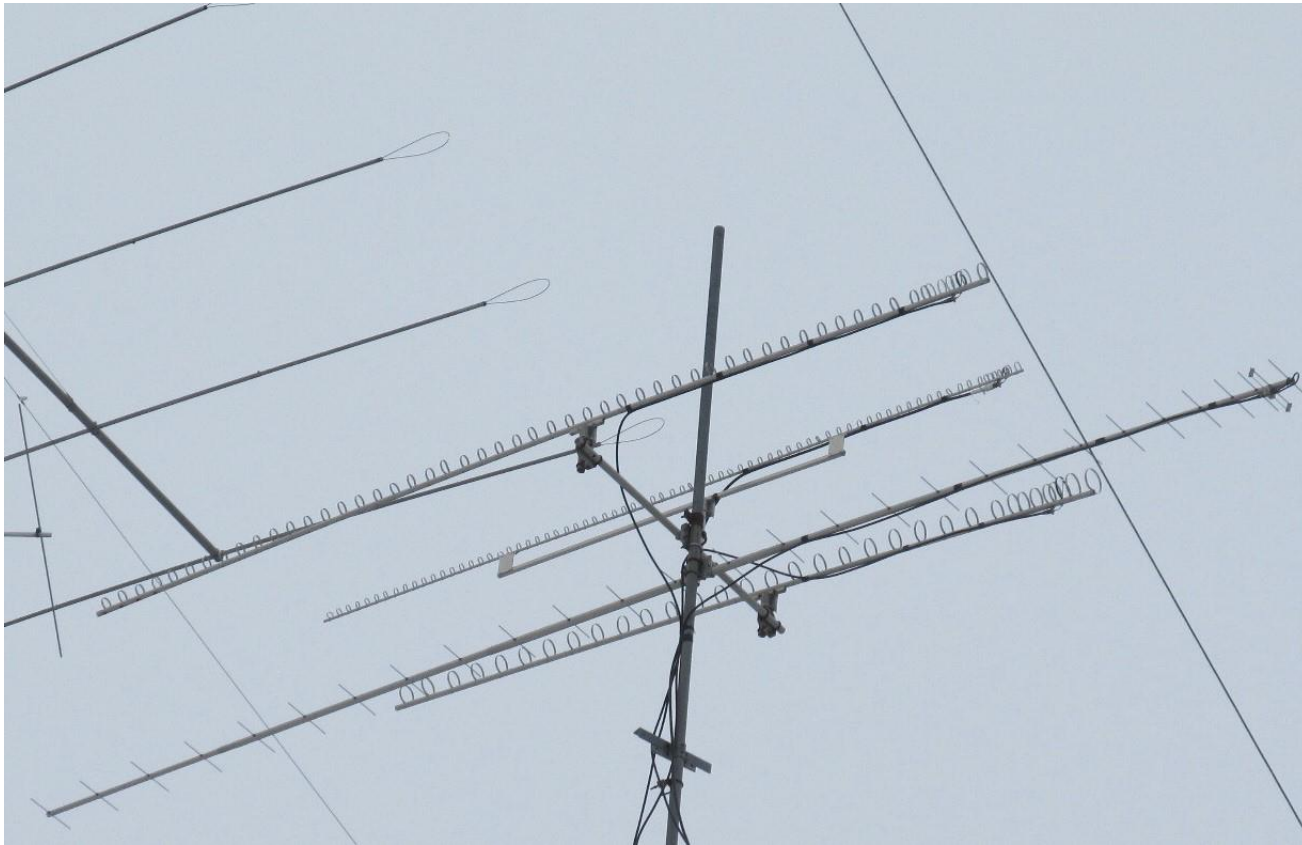
Working W0UC on 1296 ?

- Our Busted 1296 F9FT yagi may have had 4 dbi gain.
- W0UC 55 element Looper has about 21 dbi gain.
- The sum of the gains must have been enough to overcome the path loss.
- This was an Unexpected Good Result !

UHF Stack at W0UC



W0UC Enlarged



BIG & little



CLOSING



Closing



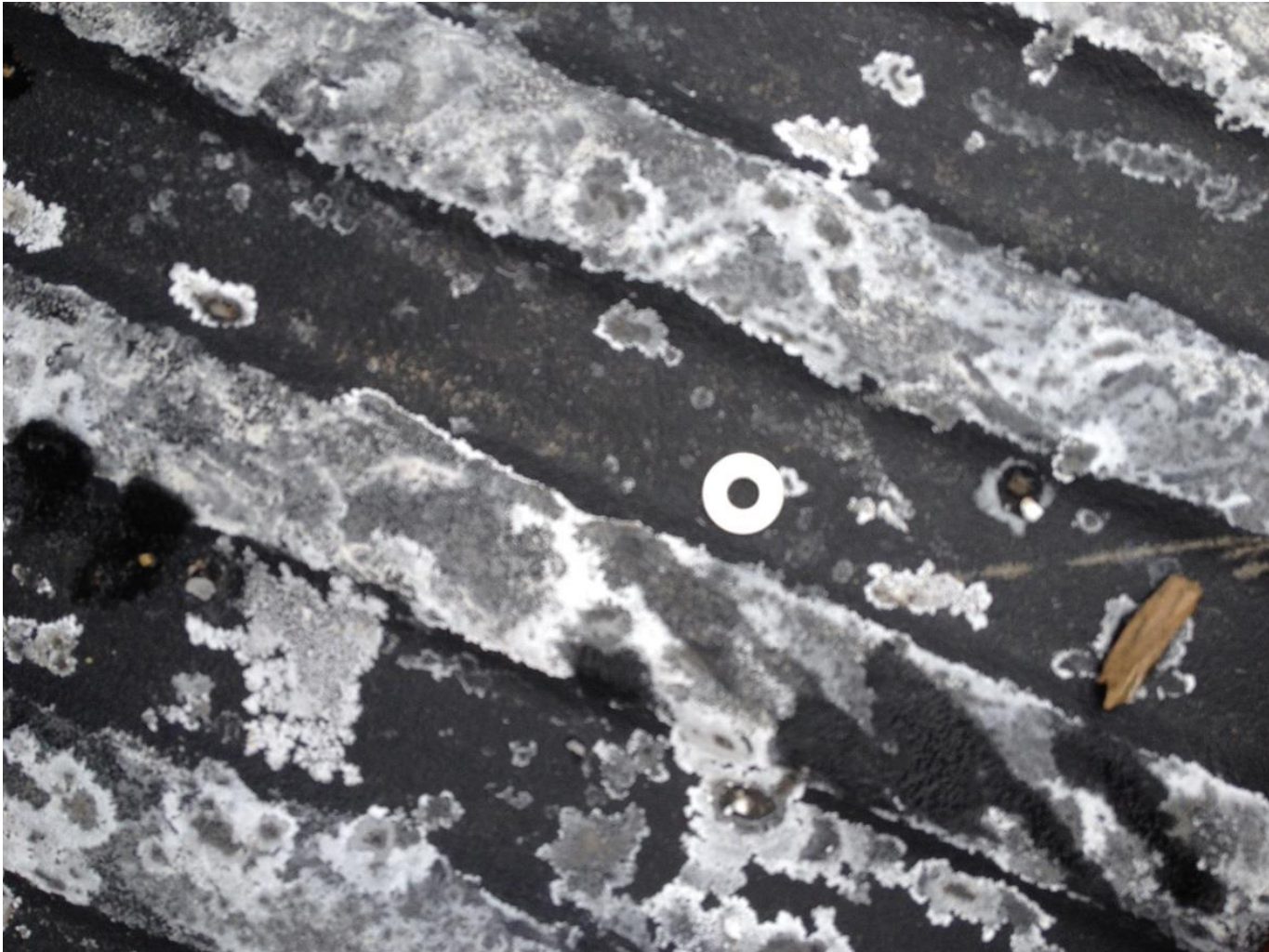
Philippians 4:8

When to Quit ?



"Maybe this is the last year I'm goin' hunting"

LOOSE WASHER AFTER 300 Mi



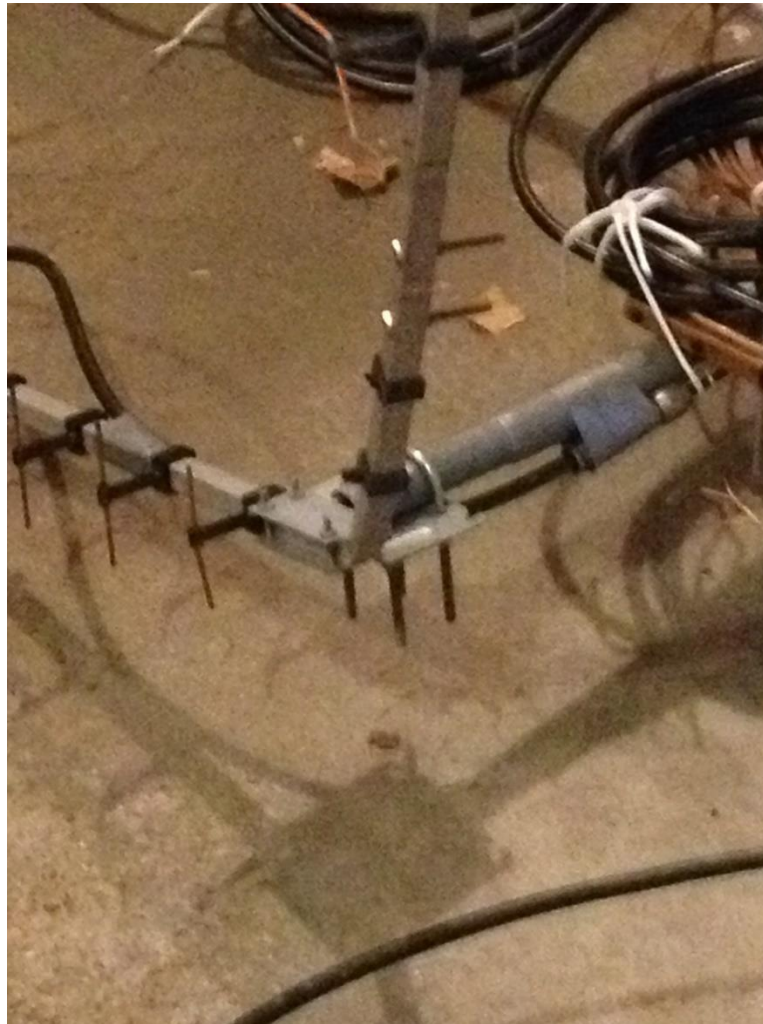
LOOSE NUT AFTER 300 mi



WHERE THEY CAME FROM



BENT 1296 MHz BOOM



BENT HASP



SEE ANYTHING WRONG ?



OLD ROVER, 8 BANDS

MeI KC0P/R

Copyright 2015 KC0P All rights reserved

TOPICS

- ANTENNAS
- RADIOS
- POWER SUPPLY
- OPERATION
- FUTURES

6 Bands Ready Friday 10 AM





AF \rightarrow RF/SQL

HF/VHF/UHF TRANSCEIVER

IC-706MKIIG

USB

144.190.01

S1 3 5 7 9 20 40 60dB

Po

5

10

MEMO

52 CH

MEMO

MEMO

MEMO

MEMO

RIT/
SUB

M-CH \rightarrow SHIFT

DIS







From EN33xw to EN34Ix (MSP)



6 Meter Dipole, 14 ft. AGL













RF POWER

Model: 902
SN: 43
Down East Micro
Made In

XM

ON

POWER



Front Facing Speakers for 271A & 1271A



IC 202A 2M Xcvr to drive 2304 MHz



2304 MHz Transverter



10 GHz, Buck Hill, EN34ir



Bands, Power, Antennas

Freq MHz	Pwr Watts	Elements	Type
50	100	1	Dipole, 14 ft AGL
144	150	6	Cheap Yagi
222	25	6	Cheap Yagi
432	100	18	K1FO Yagi
902	60	10	Cheap Yagi
1296	10	19	F9FT Yagi
2304	6	21	Dir Sys Looper
10368	2	18 by 24 in	Offset Dish

Large AGM Battery, 92AH @20 Hr.



Battery Charger in AGM mode.



LIESL, KD0VWT @ EN34io



SURVEY MARKER 92deg West





EN43aw, Beaming toward MSP



Cross Ways, Overhanging Load !



Carol, N0HZO/R in EN33wx



County 37 over I-90 Pointing at EN34Ix



Wheeler / WHWC-TV , EN45bb



Menomonie Walmart, EN44



Menomonie Walmart, EN44



4 Mi East St. Charles, EN33wx to UC



3 BAND ENTRY LEVEL



Futures

- BIGGER ANTENNAS, 2M, 6M
- MORE POWER, 1296
- MORE BANDS, 3456, 5670, 24 GHz
- BATTERY OUTSIDE, so can slide seat back
- HIGHER CHARGE RATE, direct to truck battery
- MORE OPERATORS, KE0DLQ, Mikael

Big Big-Dish-Dave



SOREN, Great Grand Son



QUESTIONS ?

